

MODEL-2403 are designed for ultra-sensitive measurement of small vibrations, low frequency. MODEL-2403 has three outputs (acceleration, velocity and displacement).



Features

- To measure small low-frequency vibration.
- Dynamic range is 120dB (acceleration), 110dB (velocity), 100dB and more (displacement).
- MODEL-2403 has no movable parts such as electromagnetic, Servo type. Easy handling.
- Waterproof structure.

Specification

Output Sensitivity

Acceleration : 10[V] / 10[m/s²]
 Velocity : 10[V] / 10[cm/s]
 Displacement : 10[V] / 1[mm]

Frequency Range (±3dB)

Acceleration : 0.2 to 150 [Hz]
 Velocity : 0.7 to 150 [Hz]
 Displacement : 0.85 to 150 [Hz]

Electrical Noise

Broadband (0.2 to 200Hz)
 : 10 [um/s²]_{RMS} / √Hz

Overall (0.5 to 100Hz)

Acceleration : 25 [um/s²]_{RMS} (Typ.)
 Velocity : 1 [um/s]_{RMS} (Typ.)
 Displacement : 0.1 [um]_{RMS} (Typ.)

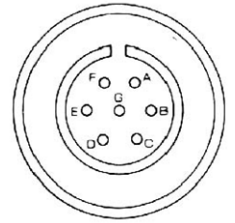
Accuracy : 3[%] (16[Hz], 1[m/s²],
 Sine-wave, 25 deg C)

Output Terminal : 7 pin connector,
 Integral cable 3m

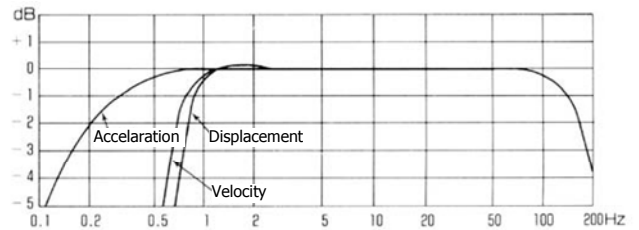
Power : ±15V_{DC}, 5mA
 Temperature Range : -10 to 50 deg C
 Shock Limit : 980[m/s²] or ±0.75mm
 (10 to 500 [Hz])
 Case Material : Aluminium
 Structure : IP65
 Size : 80×80×80 [mm],
 1.1[kg] without cable

Pin Assign

A: Acceleration Output
 B: Velocity Output
 C: Displacement Output
 D: Power (+)
 F: Power (-)
 E: COM
 G: Shield



Frequency Response



Specification

Full Scale (F.S.)

Acceleration : 0.01/0.0316/0.1/0.316/
 1/3/3.16/10 [m/s²]
 Velocity : 0.1/0.316/1/3/3.16/10/
 31.6/100 [mm/s]
 Displacement : 1/3/3.16/10/31.6/100/
 316/1,000 [um]
 Output : AC-OUT ±1[V] / F.S.
 DC-OUT 1[V] / F.S.
 Power : 006P battery (9V) ×2.
 More than 30 hours
 continuous use.
 50 hours with alkaline.

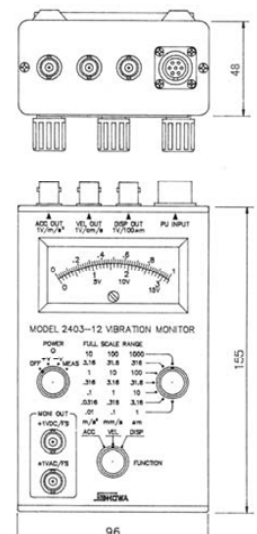
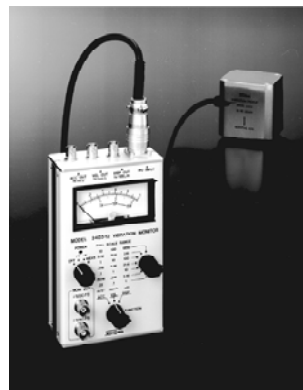
<Monitor Unit> MODEL-2403-12

High sensitive vibration detector MODEL-2403 is measured in small low-frequency vibration. The detector has been designed, by using the monitoring unit will be a highly sensitive portable vibrometer.

- So portable and easy to carry.
- Battery power, so mobility.
- Acceleration, velocity, displacement output at the same time gives
- Acceleration measurement range is 0.00001 to 10m/s².

This is the dynamic range of 120dB

* Specifications and designs presented in the product catalog are subject to change without notice for product improvement purposes.



SHOWA <http://www.showasokki.co.jp/>

SHOWA SOKKI CORPORATION E-mail: eigyo@showasokki.co.jp
 Head Office: 1-5-9, Kandaizumi-cho, Chiyoda-ku, Tokyo, 101-0024 JAPAN.
 Phone: (81)-3-3866-3210 Fax: (81)-3-3866-3060
 Factory: 1547-1, Takao-cho, Hachioji, Tokyo, 193-0844 JAPAN.
 Phone: (81)-42-664-3232 Fax: (81)-42-664-3276