

This vibration analysis system complies with the elevator ride quality standards specified by ISO. Data are collected by the equipment placed on an elevator and analyzed by a PC.

- Resolution: 0.005 m/s² (0.5 gal)
- Possible to issue a calibration certificate required by ISO
- Appended with easy-to-use software for analyzing elevator ride quality (in Japanese and English)
- 3.5" color LCD installed; waveform possible to be checked on the main body

The easy-to-see color LCD enables reduction of erroneous measurement.

As measured waveforms are displayed on the color LCD in real time, checking whether measurement and recording are properly proceeding as expected is enabled during measurement.

● Highly accurate measurement enabled

Response axis: 3 axes (X, Y, Z)

Frequency range: DC to 640 Hz

Max. acceleration: 5G (49.03 m/s²) = 4,903 gal

Resolution: 0.005 m/s² (0.5 gal)
(value required by ISO18738-1)

Max. recording length: 10 minutes

Sampling frequency: 250, 500, 1,000, and 2,000 Hz

● Easy to measure

The equipment is ready for conducting measurement only by placing it on an elevator and triggering the measurement. Measured data are stored in the USB memory and enabled with detailed analyses on a PC.



Measurement style selectable in response to a particular situation

Measurement style (1)



Measurement while monitoring waveforms in real time is enabled.

Measurement style (2)

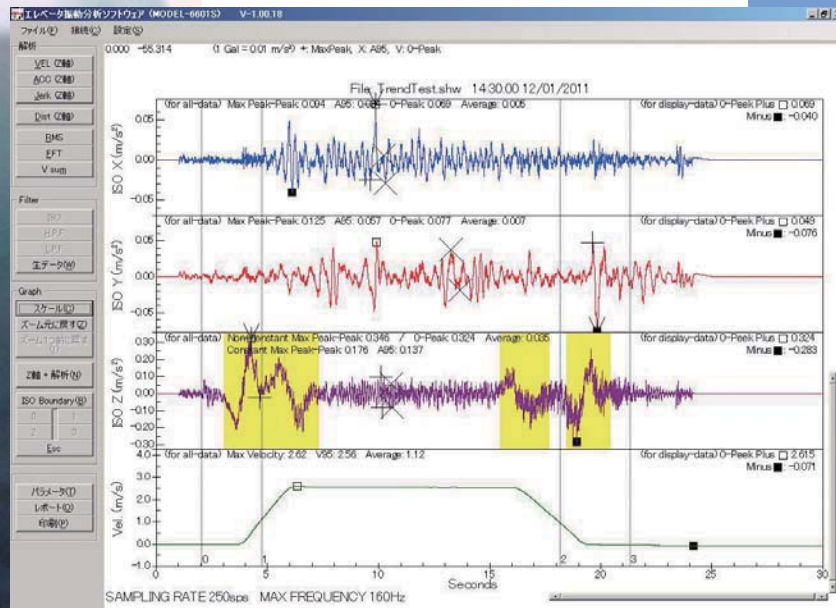


Measurement is enabled with the detector installed inside the main body and the casing lid remaining closed.

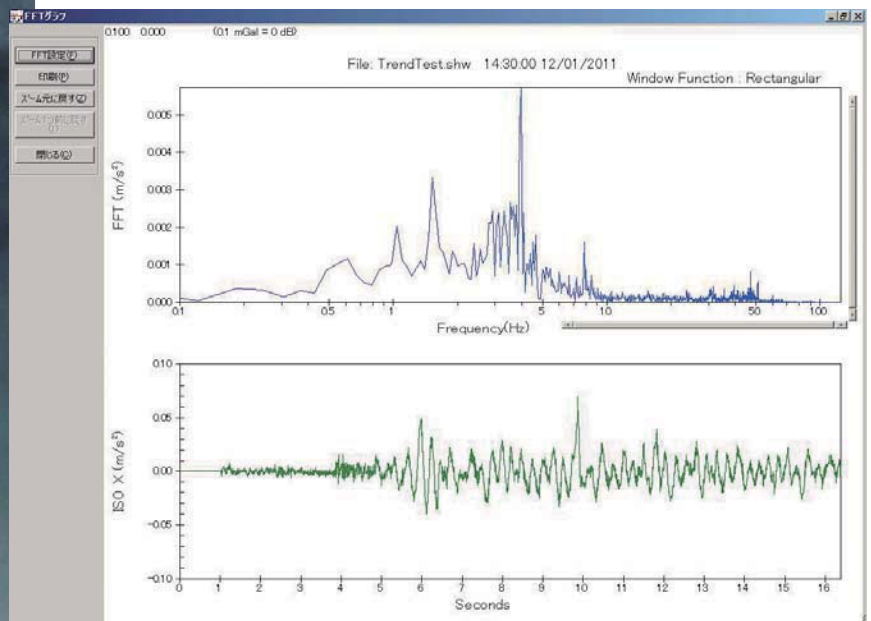
The equipment is operated by using the remote unit.

Analysis

- Various analyses required by ISO18738-1 can be easily conducted by using the dedicated software.



- The equipment is useful for identifying causes of abnormal vibration, as frequency analysis (FFT) is also enabled.



- The measurement report required by ISO18738-1 can be easily prepared by one click.

The screenshot shows a measurement report generated by the software. The report includes a table of measurements and performance characteristics.

Measurements			
Vibration level			
Max Peak to Peak	0.004	0.009	
Ave	0.005	0.006	
Vibration level (one second)			
Max Peak to Peak	0.004		
Vibration level (average)			
Max Peak to Peak	0.005		
Ave	0.006		
Performance characteristics			
Y Comp	Max	0.006	0.006
	Ave	0.005	0.005
Excursion	Max	0.009	0.009
Excursion	Ave	0.006	0.006
Peak	Max	0.009	
	Ave	0.006	

The report also includes a section for the Report, with a list of channels and their corresponding axes.

Specifications of the main body

Display	3.5" color LCD
Detector	3-axis acceleration detector; DC to 640 Hz (-3 dB)
AD converter	16 bits
Sampling frequency	Settable at 250, 500, 1,000, or 2,000 Hz.
Frequency range	Settable at DC to 80 Hz, DC to 160 Hz, DC to 320 Hz, or DC to 640 Hz.
Max. acceleration	5G (49.03 m/s ²) = 4,903 gal
Output	±2V/full scale; BNC connector for each X, Y, and Z
Resolution	0.005 m/s ² (0.5 gal)
Max. recording length	10 minutes
Recording means	Recorded in the USB memory appended.
Power supply	12V lithium-ion battery (continuous use of approx. 10 hrs)
Charging time	Approx. 10 hrs
Appearance of the main body and mass	300 (W) × 275 (D) × 110 (H) mm, 3 kg

Software specifications

Responding OS	Windows XP, Windows Vista, and Windows 7
Responding languages	Japanese and English
Report preparation	Responds to the requirement of "6.5 Reporting of results" in ISO18738-1.
FFT analysis function	Window function: Rectangular, Hamming, and Hanning Can be analyzed with raw data, and results of RMS, Average, and Filter for each X, Y, and Z.
Computing function	RMS and Average Combination of XY, YZ, XZ, or XYZ Additions of HPF and LPF (arbitrary cutoff)
Display	Provided with screen zooming function.
Max. value detection	Equipped with automatic detection function.
Output	CSV file output

Configuration

Standard configuration	Option
Vibration analysis system for elevator MODEL-6601	Calibration and traceability certificates 1 set
3-axis acceleration detector	1 unit
Detector extension cable	1 pc
USB memory	1 pc
Remote unit (with cable)	1 pc
Charger,	1 pc
Analyzing software (CD-ROM)	1 set
Inspection Results	1 set

SHOWA <http://www.showasokki.co.jp/>

* Specifications and designs presented in the product catalog are subject to change without notice for product improvement purposes.

SHOWA SOKKI CORPORATION

Head Office: 1-5-9, Kandaizumi-cho, Chiyoda-ku, Tokyo, 101-0024 JAPAN.
Phone: +81-3-3866-3210 Fax: +81-3-3866-3060

Factory: 1547-1, Takao-cho, Hachioji, Tokyo, 193-0844 JAPAN.
Phone: +81-42-664-3232 Fax: +81-42-664-3276
E-mail: eigyo@showasokki.co.jp



Agent: