

MODEL-2403 are designed for ultra-sensitive measurement of small vibrations, low frequency. MODEL-2403 has three outputs (acceleration, velocity and displacement).



## Features

- To measure small low-frequency vibration.
- Dynamic range is 120dB (acceleration), 110dB (velocity), 100dB and more (displacement).
- MODEL-2403 has no movable parts such as electromagnetic, Servo type. Easy handling.
- Waterproof structure.

## Specification

### Output Sensitivity

Acceleration : 10[V] / 10[m/s<sup>2</sup>]  
 Velocity : 10[V] / 10[cm/s]  
 Displacement : 10[V] / 1[mm]

### Frequency Range (±3dB)

Acceleration : 0.2 to 150 [Hz]  
 Velocity : 0.7 to 150 [Hz]  
 Displacement : 0.85 to 150 [Hz]

### Electrical Noise

Broadband (0.2 to 200Hz)  
 : 10 [um/s<sup>2</sup>]<sub>RMS</sub> / √Hz

### Overall (0.5 to 100Hz)

Acceleration : 25 [um/s<sup>2</sup>]<sub>RMS</sub> (Typ.)  
 Velocity : 1 [um/s]<sub>RMS</sub> (Typ.)  
 Displacement : 0.1 [um]<sub>RMS</sub> (Typ.)

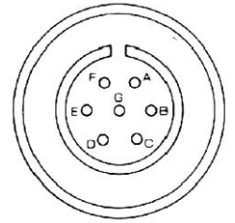
Accuracy : 3[%] (16[Hz], 1[m/s<sup>2</sup>],  
 Sine-wave, 25 deg C)

Output Terminal : 7 pin connector,  
 Integral cable 3m

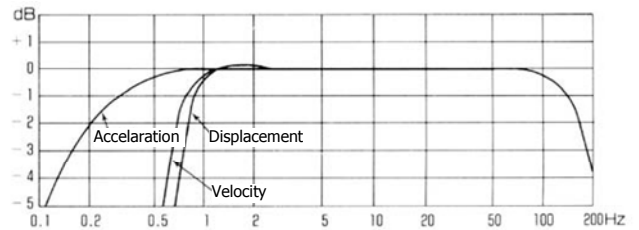
Power : ±15V<sub>DC</sub>, 5mA  
 Temperature Range : -10 to 50 deg C  
 Shock Limit : 980[m/s<sup>2</sup>] or ±0.75mm  
 (10 to 500 [Hz])  
 Case Material : Aluminium  
 Structure : IP65  
 Size : 80×80×80 [mm],  
 1.1[kg] without cable

## Pin Assign

A: Acceleration Output  
 B: Velocity Output  
 C: Displacement Output  
 D: Power (+)  
 F: Power (-)  
 E: COM  
 G: Shield



## Frequency Response



## Specification

### Full Scale (F.S.)

Acceleration : 0.01/0.0316/0.1/0.316/  
 1/3/3.16/10 [m/s<sup>2</sup>]  
 Velocity : 0.1/0.316/1/3/3.16/10/  
 31.6/100 [mm/s]  
 Displacement : 1/3/3.16/10/31.6/100/  
 316/1,000 [um]  
 Output : AC-OUT ±1[V] / F.S.  
 DC-OUT 1[V] / F.S.  
 Power : 006P battery (9V) ×2.  
 More than 30 hours  
 continuous use.  
 50 hours with alkaline.

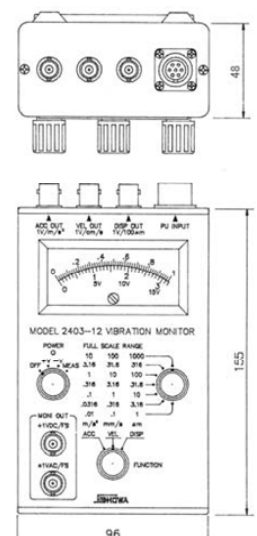
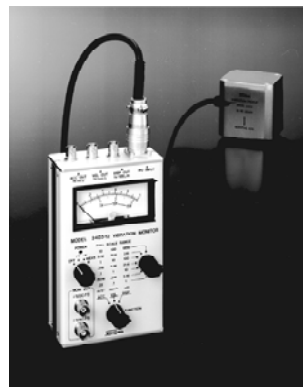
## <Monitor Unit> MODEL-2403-12

High sensitive vibration detector MODEL-2403 is measured in small low-frequency vibration. The detector has been designed, by using the monitoring unit will be a highly sensitive portable vibrometer.

- So portable and easy to carry.
- Battery power, so mobility.
- Acceleration, velocity, displacement output at the same time gives
- Acceleration measurement range is 0.00001 to 10m/s<sup>2</sup>.

This is the dynamic range of 120dB

\* Specifications and designs presented in the product catalog are subject to change without notice for product improvement purposes.



**SHOWA** <http://www.showasokki.co.jp/>

SHOWA SOKKI CORPORATION E-mail: eigyo@showasokki.co.jp

Head Office : 1-5-9, Kandaizumi-cho, Chiyoda-ku, Tokyo, 101-0024

Tel. 03-3866-3210 (main) Fax. 03-3866-3060

Osaka Branch : Hiranomachi Grand Building 6F EAST, 1-7-14,  
 Hiranomachi, Chuo-ku, Osaka, 541-0046

Tel. 06-6205-5070 (main) Fax. 06-6125-5111

Factory : 3-16-2, Sennin-cho, Hachioji-shi, Tokyo, 193-0835

Tel. 042-664-3232 (main) Fax. 042-664-3276