

Analyze vibrations using various connected vibrometers!

Waveform Import Software VIBRO-View

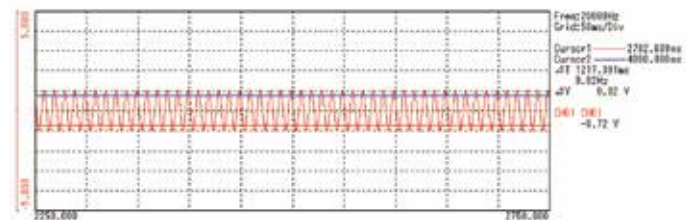
MODEL-9900



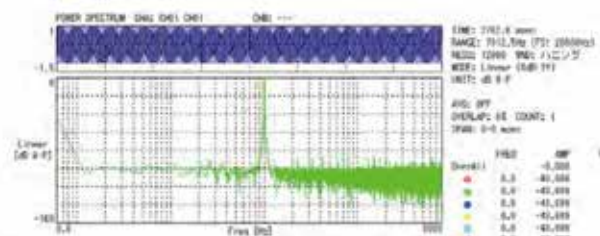
Features

- Waveform import and analysis software for up to 32 channels.
- Supports various vibrometers.
- Supports waveform (TY) graph, FFT graph, and XY graph. Allows for real time or post-processing waveform analysis.
- Allows for the addition of any filter and downsampling in post-processing.
- Can play back waveform data as audio.
- Convenient USB connection.

▼Vibration waveform (TY graph)



▼Frequency analysis (FFT Graph)



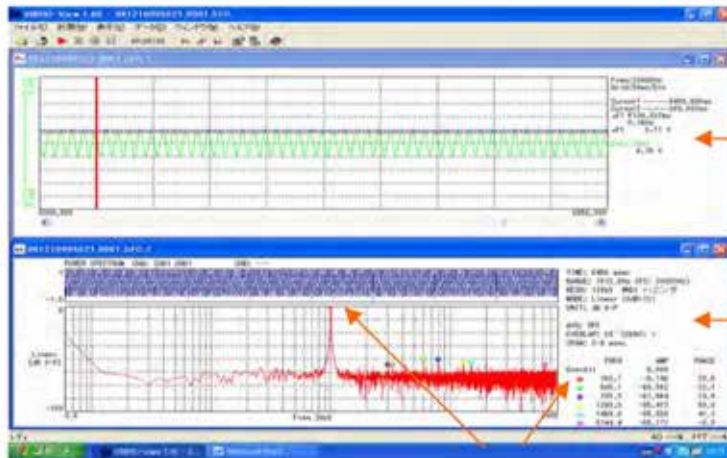
Specifications

●NO. input channels	32channels
●Input range	+/- 10V
●Input impedance	+/- 10V range, 1MΩ or more
●A/D conversion speed	2μ sec/CH (MAX.)
●Maximum sampling frequency	160kHz
●A/D conversion resolution	16bits
●PC interface	USB 2.0 connection
●Trigger	manual, one-shot, repeat

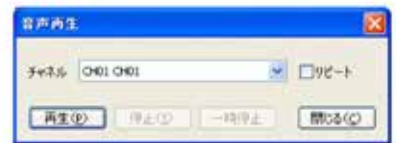
●Trigger level	Max. +/- 10V
●Recordable capacity	Depends on the available capacity of the HDD
●FFT	spectrum, transfer
●Graph	TY,XY,FFT
●File format	Binary, csv
●Windows	rectangular, hanning, flat top, hamming
●A/D converter power supply	AC 90-264V
●Others	filter (FIR, Butterworth), audio playback function

Recommended environment: PentiumM 1GHz, memory of 760MB or more (when used with 1CH at a sampling rate of 50kHz) Supports Windows 10, Windows 8.1, Windows 7, Windows XP, and Windows Vista

Analysis example



Waveform display
Time-axis waveform



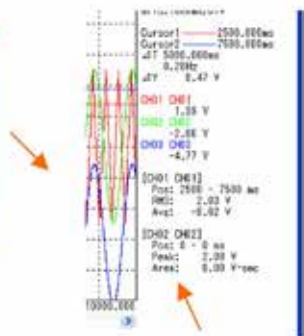
Can play back waveform data as audio

FFT graph for frequency analysis
Can be displayed in real time or post-processing.
The peak detection display clearly shows the dominant frequency.

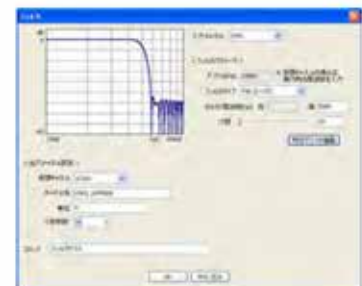
Peak detection



Can calculate RMS, mean, maximum values, and area.



Displays the results of calculation



You can add filters such as low-pass, high-pass, and band-pass filters as well as downsample data in post-processing.

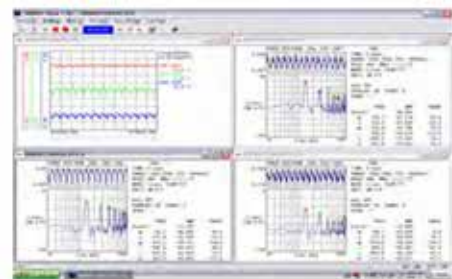
Examples of connections with a 3CH vibration measurement system



Power supply for acceleration sensors with built-in amplifiers
MODEL-9400-04



Vibration waveform analysis with a 3-axis acceleration sensor
MODEL-2460A



8CH input set VIBRO-view MODEL-9900-T03

Others



VIBRO-view
MODEL-9900



8CH terminal block
MODEL-9900-21



Cable
MODEL-9900-12



AD converter with
USB connection



32CH terminal block
MODEL-9900-22



BNC-to-BNC cable
MODEL-9803-95

■ Buffer Amplifier:

If the displayed waveform is offset when multiple channels are connected, a separate buffer amplifier is required. (ATBA-8F, 32F)

SHOWA SOKKI Corporation

Head Office / 1-5-9 Kandaizumi-cho, Chiyoda-ku, Tokyo 101-0024
Tel: 03-3866-3210 (Main) Fax: 03-3866-3060
Osaka Branch / 6F East, 1-7-14 Hirano-machi, Chuo-ku, Osaka-shi, Osaka 541-0045
Tel: 06-6205-5070 (Main) Fax: 06-6125-5111
Factory / 3-16-2 Sennin-cho, Hachioji-shi, Tokyo 193-0835
Tel: 042-664-3232 (Main) Fax: 042-664-3276
URL / <http://www.showasokki.co.jp/>
MAIL : eigyosokki@showasokki.co.jp

Distributor

※Please note that the specifications and designs described in this catalog are subject to change without notice due to product improvements.
24123H (FM)